

## VPI MESH 10 • REINFORCING MESH



### PRODUCT DESCRIPTION

Alkali resistant reinforcing mesh for use with cement/lime and polymer modified render systems to provide enhanced crack resistance to render systems onto masonry substrates. The mesh should be used in conjunction with the appropriate VPI products.

### SUBSTRATES

Masonry and walls conforming to BS 5628-3 and constructed from the following:

- Brickwork & Stonework
- Lightweight, & Dense Aggregate Blockwork
- Clay/Clinker Blocks – PoroTherm Concrete
- Aircrete/Aerated light-weight Blocks
- Well bonded existing un-painted render

#### VPI Specified Systems:

- VPI - Specified Base Coats
- RheaTherm 600
- RheaTherm 600 LR
- Painted Substrates (using RenoPass Inter)

### SUPPORTING PRODUCTS

- MONOCAL GM/GF
- MONOPASS GM/GF
- TRADIBATARD GM/GF
- RENOPASS INTER - Painted Substrates
- RHEAMIX MONO, RHEAJET
- VPI MESH

### PRODUCT APPLICATION

(Ensure the guidance for mixing including water settings/proportions are followed for complementary products)

- VPI MESH 10 is designed to be embedded into supporting products listed above to provide enhanced crack resistance of the render system.
- See below application details.

### APPLICATION CONDITIONS

- Temperature: +5°C +30°C.
- Do not apply in wet weather
- Do not apply if there is a risk of Frost or Freezing Conditions

### SUBSTRATE PREPARATION

Please contact VPI UK Ltd for specific application procedures

- Substrate must be clean, dry, dust free: e.g: formwork oil, curing agent...
- Construction should conform to BS 5628 code of practice for use of masonry
- Remove excess render/plaster, mould/release oil, paint and masonry coatings.

### TECHNICAL CHARACTERISTICS

APPEARANCE: White with Blue Logo

COMPOSITION: Alkali Resistant Glass Fibre

*Information provided in this document is based on our knowledge and experience of the products supplied, application results can vary depending on the application methods and skill of the installer of the products. Before application of the products in the information sheet it is recommended to check if this is the most current and up to date version of the document.*

# VPI MESH 10 • REINFORCING MESH

## PRECAUTIONS FOR USE

To protect your health and the environment, and for safe use of this product, follow the precautionary statements which are labelled on the packaging. You will find the safety instructions for this product in the Safety Data Sheet.

## PRODUCT COVERAGE:

- 1mx50m Roll = 50m<sup>2</sup>

## PACKAGING:

- 24 Rolls per pallet - Shrink wrapped and labelled.

## STORAGE:

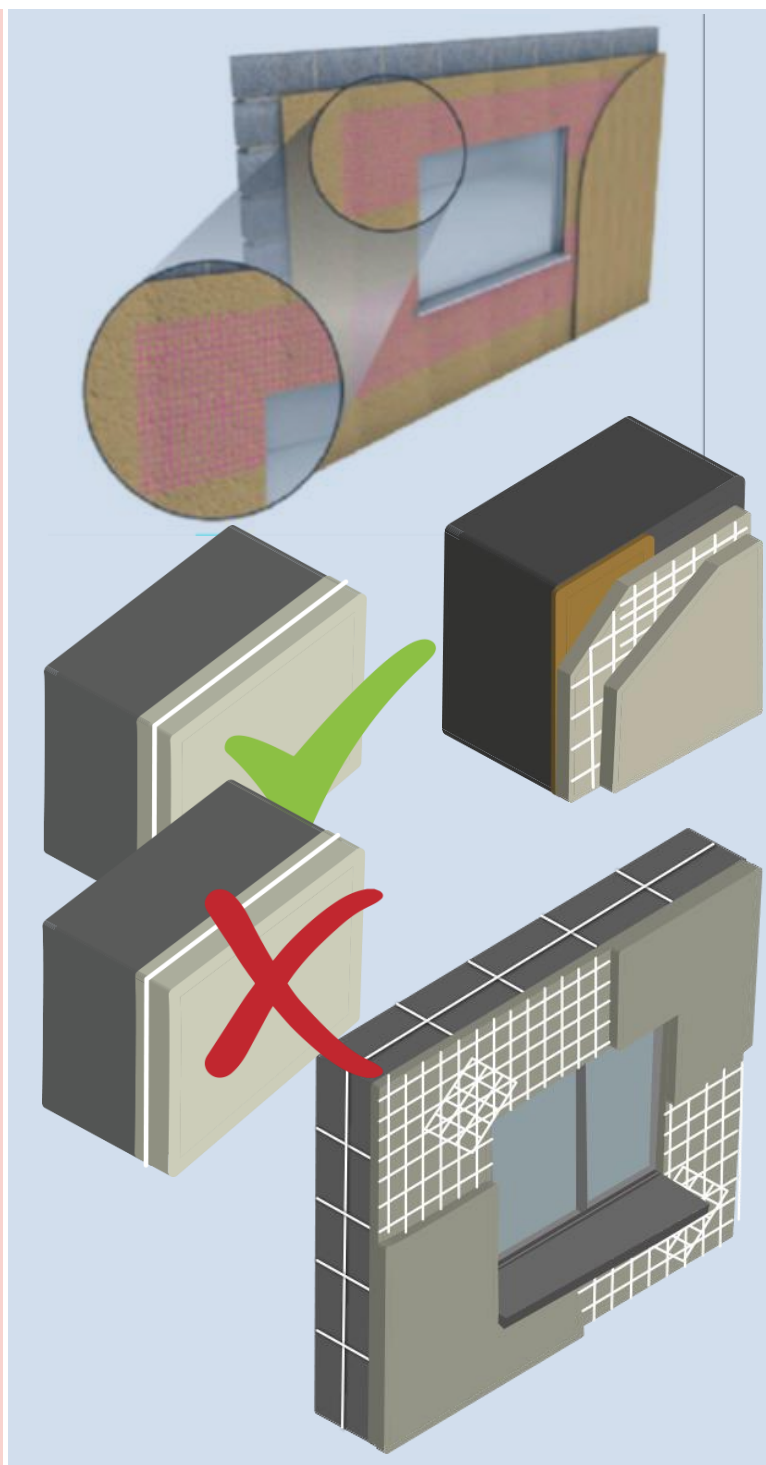
Store vertically in a cool dry, environment without contact with the ground at a consistent temperature.

## HEALTH & SAFETY:

Suitable protective clothing required when handling and using this product. The product contains materials which can cause an allergic reaction, irritation to eyes and harmful consumed. Seek medical advice in case of contact with eyes. Keep out of the reach of children and minors.

Always read and follow the guidance set out in the Health and Safety data sheet for this product.

## APPROVALS:



Information provided in this document is based on our knowledge and experience of the products supplied, application results can vary depending on the application methods and skill of the installer of the products. Before application of the products in the information sheet it is recommended to check if this is the most current and up to date version of the document.